

2026-2027 Season Packet



POWER Cheer





Power Cheer

WELCOME

Welcome to the 2026-2027 Power Cheer All-Star Season!

We are absolutely thrilled to have you join us for another incredible year at Power Cheer! As a non-profit organization, our mission goes beyond the sport—we are dedicated to instilling lifelong qualities in our athletes, such as confidence, work ethic, loyalty, commitment, dedication, leadership, teamwork, and integrity. More than just training great cheerleaders, we strive to shape strong, resilient individuals both physically and mentally.

Our coaching staff, many of whom generously volunteer their time, are dedicated to developing athletes both on and off the mat. Their commitment ensures that every athlete receives high-quality training, guidance, and support in a positive and encouraging environment. Our program would not be possible without their generosity and dedication.

As we embark on this season together, please know that our top priority is building confidence in our athletes. We believe this confidence will help them grow into hardworking, dependable adults. Along the way, they will form friendships and memories that will last a lifetime.

Competitive cheerleading is about so much more than just competition. While we are excited to develop skills in jumps, tumbling, stunting, and dance, we are even more excited to welcome you and your family into ours. Power Cheer is a community of dedicated parents, athletes, and coaches working together to provide the best life lessons and training possible. Our shared values of family, dedication, and honesty are what keep us strong and growing each year.

As a non-profit, we are driven by passion and purpose, not profit. Every effort we make is to benefit our athletes and create a positive, supportive environment where they can thrive.

Thank you for trusting us with your athlete and for being part of the Power Cheer family. Together we continue to grow, train hard, support one another, and represent our community with pride.

Let's make it an unforgettable year together!

WHAT MAKES POWER CHEER DIFFERENT

- Nonprofit mission
- Volunteer coaches
- Affordable All-Star training
- Community-driven culture

OUR STORY

Power Cheer began as Woodmen Power Cheer in 2021 with just one team and a big dream. Our fearless leader, Emme Lee, envisioned building a competitive cheer program for South Side families—one that kept costs low and removed the barriers that often prevent young athletes from accessing the sport they love.

Over the next couple of years, that vision started to take root. The program expanded to two teams, supported by a growing network of passionate volunteers who stepped up to make it all possible.

In April 2024, thanks to the tireless efforts of our incredible Mafia volunteers, we opened the doors to our very own gym! This exciting milestone allowed us to reach even more athletes and serve a larger portion of our South Side community.

Since then, we've continued to grow—now welcoming athletes from over six school districts in the area. As we've expanded, our identity evolved too, and we became simply Power Cheer—a name that reflects the unity and spirit of our entire Mafia family.

Now operating as a 501(c)(3) nonprofit organization, Power Cheer has flourished both in size and spirit. We're proud to have six teams, with three of them heading to The Summit April 2025—a huge accomplishment for our program!

We remain committed to offering South Side youth the chance to experience competitive cheer, create lifelong memories, and be part of something truly special.

Over the years, our program has continued to grow as more athletes and families have joined the Power Cheer community. As our athletes developed stronger skills and a passion for competitive cheer, we began evolving our program to provide additional opportunities for growth.

Beginning with the 2026–2027 season, Power Cheer will officially transition to an All-Star program structure. This shift allows us to provide more structured training, expanded competition opportunities, and clearer development pathways for athletes at every level.

While our competitive structure is evolving, our mission remains the same: to serve our community, keep cheer accessible and affordable for families, and build confident athletes who grow both on and off the mat.

COMMUNICATION

We are happy to answer your questions!

ADDRESS

Power Cheer

415 Park 800 Drive

Greenwood, IN 46143

PHONE

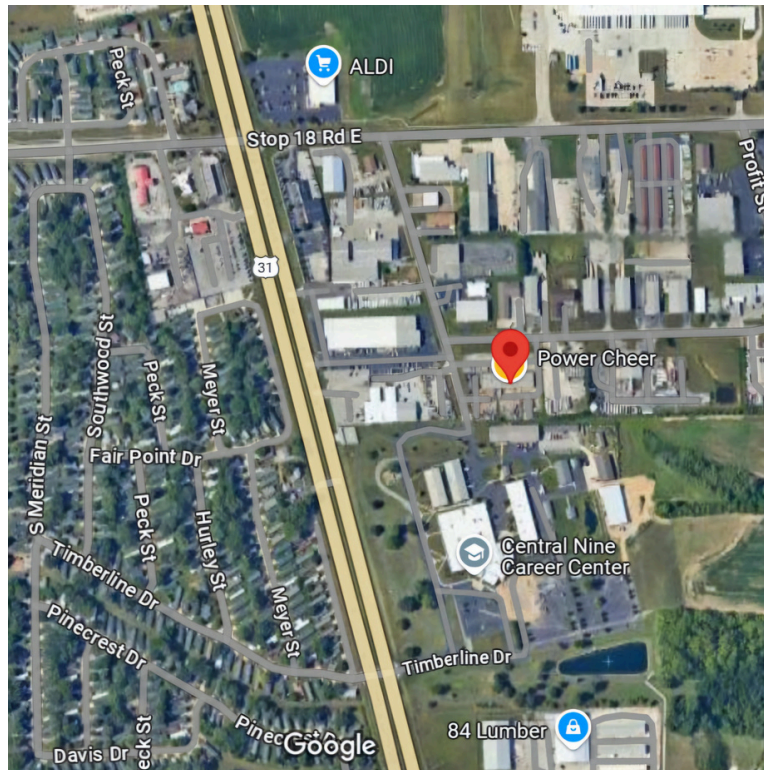
(317)835-1617

EMAIL

powercheermafia@gmail.com

WEBSITE

www.powercheer.org



SOCIAL MEDIA

Facebook: facebook.com/powercheer

Instagram: [@powercheermafia](https://instagram.com/powercheermafia)

Tiktok: [@powercheermafia](https://tiktok.com/@powercheermafia)

[#powercheermafia](https://tiktok.com/hashtag/powercheermafia)

Our Program Pathways

OUR TEAM STRUCTURE

At Power Cheer, we offer multiple team pathways designed to serve athletes at different commitment levels while keeping our nonprofit mission at the heart of everything we do.

All teams focus on:

- Skill development
- Teamwork
- Character building
- Competition experience
- Community involvement

Below is an overview of each pathway and its commitment expectations.

Short Season Teams

Designed for athletes looking for a structured competitive experience with a lighter weekly commitment.

Structure:

- One practice per week
- Limited competition schedule
- Participation in gym showcases and community events

Commitment Expectation: Short season athletes commit to their full season term and scheduled competitions once placements are finalized.

Novice Teams

Designed for athletes building foundational competitive skills in an all-star format.

Structure:

- Two practices per week
- Local competitions
- Full routine including stunts, tumbling, jumps, and dance

Commitment Expectation: Novice teams require consistent attendance and full-season participation.

Prep Teams

Designed for athletes ready for increased intensity and stronger competitive focus.

Structure:

- Two practices per week
- Expanded competition schedule
- Skill progression in tumbling and stunting
- Possible Travel and bid-qualifying event opportunities

Commitment Expectation: Prep teams require full-season dedication and consistent participation in practices and competitions.

Elite Teams

Designed for athletes competing at the highest level of our program.

Structure:

- Three practices per week
- Additional required class
- Travel and bid-qualifying event opportunities
- Advanced choreography and competitive preparation

Commitment Expectation: Elite teams require the highest level of attendance, training consistency, and financial commitment due to the competitive structure and choreography demands.

OUR TEAM PLACEMENT PROCESS

All athletes will be placed on a team! Our goal is to help each athlete develop and compete at the level that best supports their growth and success.

Team Tryouts

- These evaluations determine final team placements for the upcoming season.
- Some factors that come into play when forming a team include, but are not limited to:
- Athlete’s maturity and coachability
- Abilities in stunting, pyramids, tosses, jumps, dance, and motions
- Age and overall team composition

Summer Development & Goal Setting

- Based on spring evaluations, each athlete will set specific goals for the summer to improve their skills, strength, and overall performance.
- Summer training is open to all cheerleaders—athletes from any cheer programs are welcome to attend.
- You do not have to be joining a regular season team to benefit from summer training. It’s a great opportunity to refine skills, gain confidence, and prepare for future cheer opportunities.
- Coaches will provide guidance on training focus areas to help athletes reach their potential.

Important Note:

- Tumbling skills alone do not guarantee placement on a specific team. Team placement is based on a combination of factors and we do our best to place all athletes where we believe they will be most successful.
- Please trust our decision—our goal is to place each athlete in an environment where they can grow, contribute, and thrive throughout the season.

Our goal is to ensure every athlete is in the best environment to improve, compete, and enjoy the season ahead! By setting and working toward their summer goals, athletes will have the best chance to achieve their desired placement in the fall.

TEAM INFORMATION

TEAM RESERVES

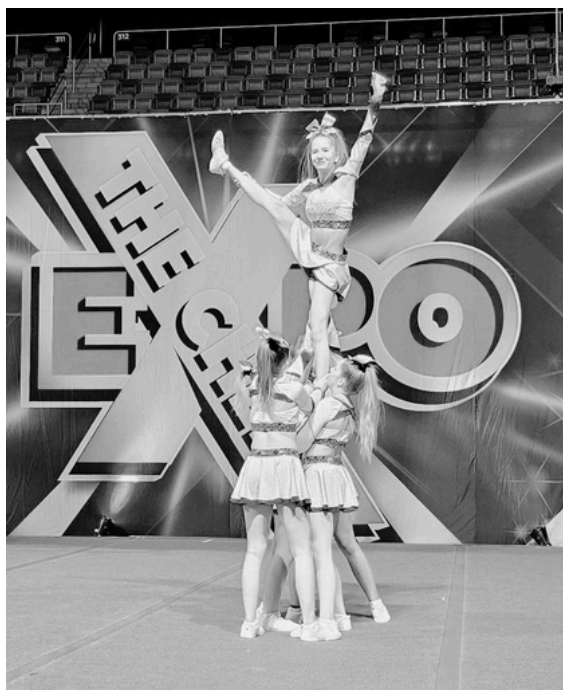
Although tryouts are the primary assessment, constant re-evaluation continues throughout our season and new opportunities arrive. Reserves may be selected for a team at the coaches' discretion in preparation for injury, illness, violation of policy or other unforeseen circumstances requiring removal from a team. Reserves will be expected to attend team practices once a month. In the event that an alternate is required to compete, all athlete crossover fees will apply.

CROSSOVERS

Crossing over to another team is when an athlete competes and practices with a second team in addition to their main team. Crossing over is meant to allow those who want to practice and perform purely for the love of the sport. The only additional costs to crossover participants are the following: paying the crossover competition fees, additional practice wear fee, and possible uniform fee. Please indicate if you'd be interested in being considered for crossover on the athlete registration form. Crossovers are considered on a case by case basis and are not guaranteed.

END OF SEASON BID QUALIFYING INFO

The intent for which end of season bid each team is going for will be discussed at the informational parent meeting of the season, so that families can plan accordingly. In the event that a team qualifies and receives a bid to an end of season event, a parent meeting will be scheduled the week after the qualifying event to discuss the gym's plans for event attendance.



COMMITMENT

ATTENDANCE POLICY

Cheerleading is a unique sport as it requires ALL team members to be present in order to accomplish and maintain all individual and team goals. If ONE member is absent, the whole team is affected as groups cannot stunt, formations must be changed, etc. All practices are mandatory.

PURPLE ZONES

“Purple Zones” are mandatory practice blocks primarily in preparation for a competition. Failure to attend a practice during these blocked schedules may result in the athlete's non-participation of the upcoming competition event.

COMPETITIVE SEASON LENGTH

Power Cheer offers both Full Season Teams and Short Season Team opportunities to allow athletes to participate at different levels of commitment throughout the year.

Full Season Teams

When an athlete commits to a Full Season Team, they are committing to the entire cheer season, which runs from June 1, 2026 through May 30, 2027.

Full Season athletes participate in regular practices, performances, and competitions throughout the year. Being part of a Full Season team requires dedication, consistency, and teamwork, as each athlete plays an important role in the success of the team.

Families should be prepared to support their athlete's participation throughout the full season.

Short Season Teams

Power Cheer also offers Short Season Team opportunities for athletes who would like to participate in competitive cheer with a shorter time commitment.

Short Season Teams run during three different sessions throughout the year:

Session 1: May – August

Session 2: September – December

Session 3: January – April

Each session provides athletes the opportunity to train, perform, and experience competitive cheer during that time period.

While the time commitment is shorter than the Full Season program, athletes are still expected to attend scheduled practices, performances, and competitions during their active session, as each athlete plays an important role in the team.

SEASON COMMITMENT

Power Cheer is a team-based competitive program. When an athlete accepts placement on a team, that commitment directly impacts every other athlete on that roster. Choreography, formations, stunt groups, and competition strategy are built specifically around each team member.

For this reason, participation in a Power Cheer team is a full-season commitment.

IMPORTANT DATES

We've pulled together some important summer and season dates for you.

2026-2027 Schedule

Practices are at 415 Park 800 Dr. Greenwood, IN 46143

Schedule Subject to Change, not all teams go to all comps. Which competitions each team is participating in will be discussed at parent meetings.

May

Spring Evaluations
Tryouts

June

Cheer Camp
Freedom Festival Parade

July

Teams Holiday Break, Gym Closed
Johnson County Fair Parade
Gym Wide Family Day

August

Choreography Begins

September

Team Mascot Day
Franklin Fall Festival
Glow Lock in

October

Fall Break Gym Closed
Greenwood Halloween Parade

November

Winter Showcase
Gym wide Charity Event
Thanksgiving Break Gym Closed

December

Competition Season Begins
Winter Break

January

-End of Winter Break
Competitions Cont.

February

Competitions Cont

March

Competitions Cont
Spring Break Gym Closed

April

Spring Showcase
Travel End of Season Competitions

May

End of Season Banquet

This is a rough draft of next seasons schedule. Once finished it will be made available to everyone.

SUMMER WEEKLY SCHEDULE

JUNE- JULY 2026

MONDAY

- 6:00-7:00PM MINI STUNT PRACTICE
- 7:00-8:00PM LEVEL 1 STUNT PRACTICE
- 8:00-9:00PM LEVEL 2+ STUNT PRACTICE

TUESDAY

- 6:00-7:00PM MINI STUNT PRACTICE
- 7:00-8:00PM LEVEL 1 STUNT PRACTICE
- 8:00-9:00PM LEVEL 2+ STUNT PRACTICE

WEDNESDAY

- 6:00-7:00PM GREEN TUMBLING & CONDITIONING
- 7:00-8:00PM PURPLE TUMBLING & CONDITIONING
- 8:00-9:00PM OPEN FLOOR TIME

THURSDAY

- 6:00-7:00PM STRENGTH & STRETCHING
- 7:00-8:30PM GOLD TUMBLING & CONDITIONING

Private and semi-private times on the floor can be scheduled as well.

EXAMPLE REGULAR SEASON WEEKLY SCHEDULE

MONDAY

5:30-6:30PM MINI TEAM 1 & 2

6:30-8:00PM TEAM 1

8:00-9:30PM TEAM 2

TUESDAY

5:00-6:00PM OPEN FLOOR TIME

6:00-7:30PM TEAM 3

7:30-9:00PM TEAM 4

WEDNESDAY

5:30-6:30PM MINI TEAM 1

6:30-8:00PM TEAM 1

8:00-9:30PM TEAM 2

THURSDAY

5:30-6:30PM MINI TEAM 2

6:30-8:00PM TEAM 3

8:00-9:30PM TEAM 4

Private and semi-private times on the floor can
be scheduled as well.

GYM ACTIVITIES AND EVENTS

Each season our teams have fun activities through the year. Gym athlete activities and events are mandatory for all athletes. They are ways for the teams to bond and make their season more fun and not just work. Here are some of those activities.

Parades

Power Cheer participates in multiple parades throughout the season. All athlete are required to attend all parades. Athletes march and perform team chants, while younger athletes ride in our truck. Expected parades are Greenwood Freedom Festival Parade, Johnson County Fair parade, Franklin Fall Festival, and Greenwood Halloween parade. We may add or remove parades throughout the season. Each season we pick a theme and the athletes dress in this theme while passing out candy. Third is a winter holiday parade, we have some great holiday fun dressing up in our warm ups and showing the local community how loud we can be.

Showcases

We have 2 showcases a year. These are events where all the teams perform their routines. They are free events for all that Power Cheer puts on. It is a great opportunities for everyone to see how amazing our kids are. These events are held locally near the gym. They are completely run by our volunteers, which allows them to be no cost for anyone. We are able to do this as well because we have some raffles and food available at the events and use those proceeds to cover any cost incurred putting the showcases on.

COMPETITIONS

Competitions are fun and exciting days for both athletes and their families. They take a lot of planning, patience, and grace to make great. To make them wonderful our program handles competition days a bit differently then most performance/competitive programs.

Mascot Days & Team Parties

During the month of September each team will have a team party and Mascot day. On this day the team as a whole goes to Build-a-Bear and creates their teams Mascot for the season. Also on this day a team party is planned. Parents and coaches work together to create some fun team bonding for their athletes. The particular activities of the party are up to those planning it.

Team Bonding

Throughout the season we try to put on a few other team specific activities. We want to be sure the kids truly enjoy their season.



Glow Lock-in

At the beginning of the season we have a gym wide Glow lock-in. This is an amazing event put on by the coaches and parent volunteers. The athletes get to come and have fun throughout the night. Now athletes under the age of 8 unfortunately will not be able to stay the entire night. Depending on their age there will be set times that these athletes will get to stay till. Athletes 8 and older will be allowed to stay throughout the night. At the parents discretion of course. But everyone is welcome back in the morning for our pancake breakfast.

Team Photos

Each season, we take team photos at the gym. We're fortunate to have a volunteer photographer each year who generously donates their time and talent. Once the photos are ready, we receive them digitally at no cost and share them with our families—also free of charge.

Family Events

A few times a year we do have family activities or events as well. Some of these events are mandatory but most are not. Our largest one of the season is our year end party. This is when all our families come together for a cookout at the gym and celebrate all the hard work our amazing athletes put in for the season.

Parent Events

Also throughout the season we try to have some fun activities for our parents. These of course are not mandatory but we highly encourage you come if you can. Our program is not just about cheerleading. It is about building friendships and bonds for everyone involved.



2026-2027 PROGRAM COSTS

ANNUAL REGISTRATION FEE

\$50

TEAM FEES

Paid Monthly

Short Season – \$75

Novice – \$105

Prep – \$115

Elite – \$130



TOTAL COMPETITION FEES

Total competition fees are different for each team. They are dependent on the number of competitions the team does for the season and whether the team chooses to do an end of season travel competition. The expected number of competitions is between 2-6 per team. Competitions typically range between \$75-\$200 each.

COMPETITION GOODIES

For each competition we give the athletes a little goodie bag of items. Parents of the teams going to that competition work together to make these happen for the athletes.

SHOWCASES

All teams perform at our winter and spring showcases. These are no cost performances we do so that all family and friends are able to see our amazing athletes.

PARADES

We do at least 3 parades each season. Typically we get matching items that cost around \$5-\$8. Please see the parades section for more details.

PAYMENT SCHEDULE

Monthly Tuition is due on the 1st of each month for the entire season.

Competition & Supply Fees are on the 15th of each month June-September

2026-2027 Supply Packages

SUPPLY PACK FEES

We do our best to keep the cost for these items as low as possible. Cheer supply pack fees are broken up into payments throughout the beginning of the season to help with expenses.

Short Season Supply Package

Includes:

- Practice apparel set (1 tops, 1 bottoms)
- Practice bow & socks
- Cheer Shoes
- Competition uniform
- Competition bow & socks
- Garment Bag
- water bottle

Estimated Package Total: \$235

Elite Supply Package

Includes:

- Practice apparel set (3-tops, bottoms, bows, sports bras & socks)
- Practice Shoes
- Competition Uniform
- Competition socks, sports bra, & bow
- Competition Shoes
- Garment Bag
- warm ups
- team bag
- water bottle
- Additional team-branded item (if applicable)

Estimated Package Total: \$540

Full Season Novice Supply Package

Includes:

- Practice apparel set (2 tops, bottoms, bows, & socks)
- Practice Shoes
- Competition uniform
- Competition bow & socks
- Competition Shoes
- Garment Bag
- warm ups
- team bag
- water bottle

Estimated Package Total: \$455

Prep Supply Package

Includes:

- Practice apparel set (2-tops, bottoms, bows, & socks)
- Practice Shoes
- Competition Uniform
- Competition socks, sports bra, & bow
- Competition Shoes
- Garment Bag
- warm ups
- team bag
- water bottle

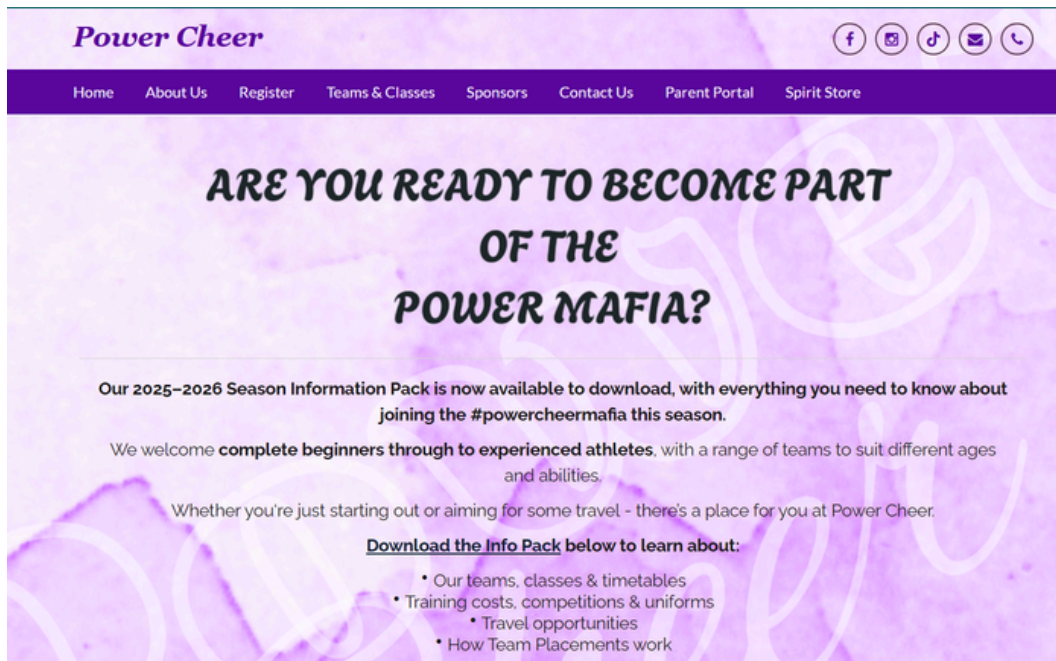
Estimated Package Total: \$490

Families who already own approved, like-new items (such as practice shoes or team bags) may not be required to repurchase those items pending coach approval.

PARENT PORTAL

CREATING A FAMILY PROFILE ON POWERCHEER.ORG

If you are a new Power Cheer member, please be sure to do this before evaluations.



1. Go to Power Cheer website, powercheer.org, click on the parent portal tab.

2. Create a family account.

3. After you have entered your information, you will be able to manage your account throughout the season.



